

CHAPTER 7 MOBILE APPLICATION INSTALLATION AND USAGE

You can remotely monitor all channels of DVR through your mobile device. The required mobile application is from DVR manufacturer and it supports mobile OS for both Windows mobile 5.0 above and Symbian.

Please confirm network function of DVR has been activated before mobile connection:
Main menu → Network Setup → HTTP Setup → Check the “Enable HTTP Server”

7-1 Mobile Application Installation and Operation for Symbian System.

Mobile Device: Nokia, SonyEricsson...etc.

System requirement:

GPRS/ 3G must be provided from your telecom service.

Mobile device that supports GPRS/ 3G protocol and Java cldc1.0/midp 2.0 environment

***Please download both” DVRH264.jar” and “DVRH264.jad” to operate the function.
Note that users with Sony Ericsson will only need to download “DVRH264.jar.”**

7-1.1 Mobile Application Installation

Please follow the steps cited below to perform the mobile device surveillance function.

Step 1: The mobile application called “**DVRH264.jar**” need to be installed in your mobile device.
The application can be downloaded directly from the manufacturer’s website to your mobile or; alternatively, it can be transferred to your mobile device from the CD that packed with DVR through Bluetooth or USB cable.

Step 2: Install the application software “**DVRH264.jar**” in your mobile device. It might be installed automatically after downloading; otherwise, select it from the downloading file for installation.



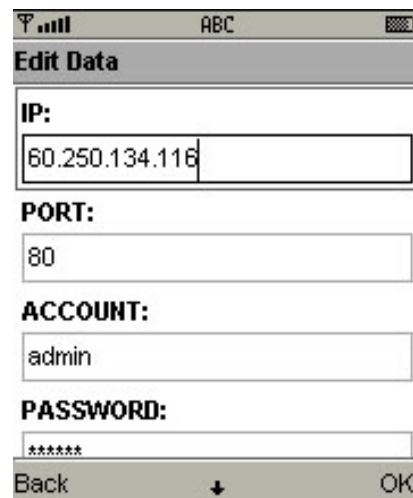
7-1.2 Mobile Application Operation

After the installation, enter the Program Files menu in your mobile device to run a file called “DVRH264”.

Select “Menu” at the right lower corner of your mobile screen, 4 commands, **Login Add Modify** and **Delete**, will show up.

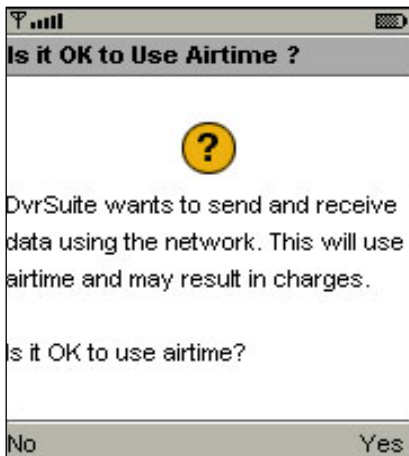
7-1.2.1 Add New Login DVR

To log into the DVR, you need to enter the logging-in DVR information. Find “Add” under the “Menu” then enter logging-in DVR’s IP address, Port number, account name and password. Press “Add” to save this information after entering.



7-1.2.2 Logging Onto the DVR

Use the Login command to log onto a DVR and monitor live images. If multiple DVRs have been added to the mobile application, they will be listed by name, you can select one to log onto.



A confirmation message might show up for network charge before connection. The fee rate will depend on the telecom company and package fee you go with.

Network connectivity by networking Live image will show

PS. The Live can n when the recoding 7-1.2.3 Modify the

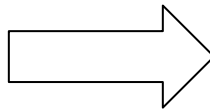
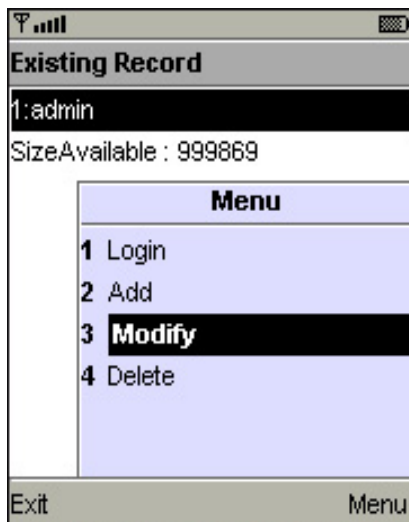
You can use the login information of that of the "Add" command.



will take some time. It'll be affected environment and bandwidth flow. up after a successful connection.

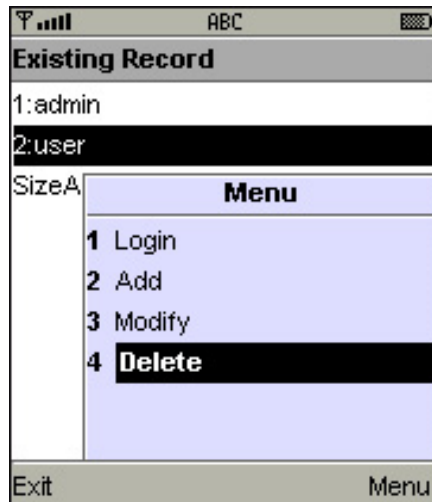
ot be displayed in your mobile is off in local DVR. Login Information of DVR

"**Modify**" command to change the DVR. The dialogue is identical to



7-1.2.4 Delete the Login Information of DVR

"**Delete**" command can be used to remove the DVR information if it is no longer useful. Select the DVR on the name list then choose "**Delete**"



7-1.3 Live Monitoring Operation

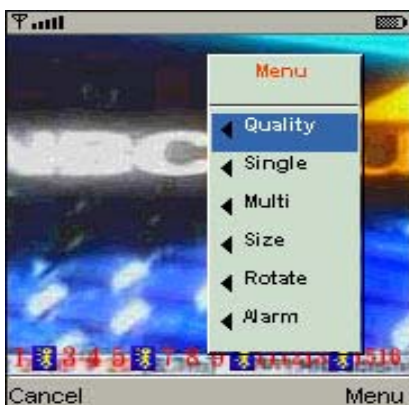
This paragraph describes some operation under the LIVE monitoring mode in your mobile device.

7-1.3.1 Scroll the Image

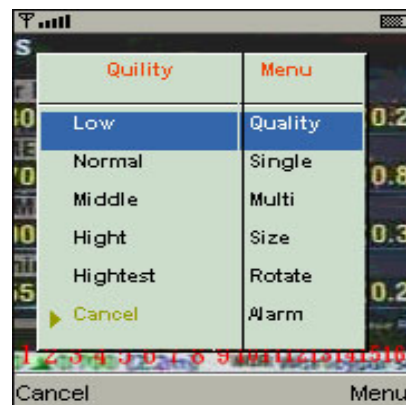
You can use the keypad on your mobile device to scroll the image if it's oversized.

Key	Action
2	Scroll Up
4	Scroll Left
6	Scroll Right
8	Scroll Down

7-1.3.2 Image Quality Setup

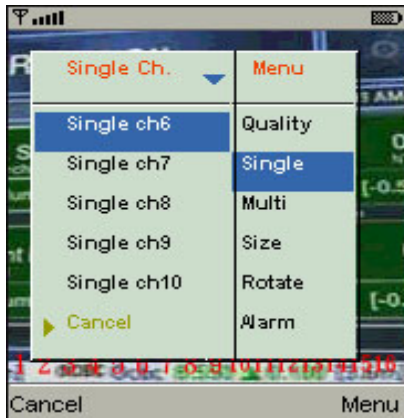


Select **“Quality”** under the **“Menu”**



There will be 5 levels for your to choose: **Low** 、
Normal 、**Middle** 、**High** and **Highest**.

7-1.3.3 Channel Display

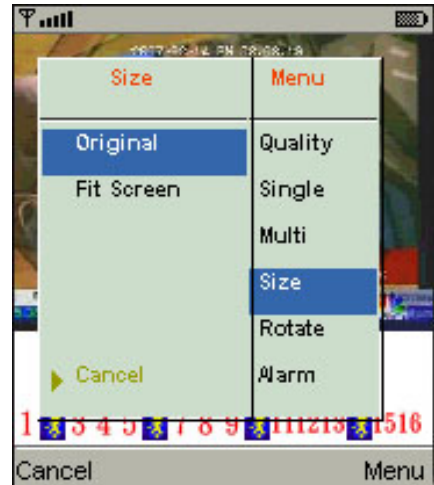


Select “**Single**” under the “Menu”, there will be all channels of your DVR in list for you to choose.

PS. The Live can not be displayed in your mobile when the recoding is off in local DVR.

7-1.3.4 Size of Image

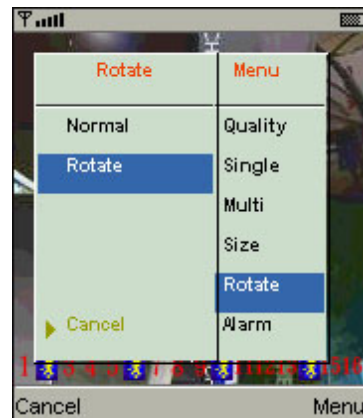
The screen size of different mobile device can be different. You can select “**Size**” under the “Menu” to choose from “**Original**” or “**Fit Screen**” to resize the display image.



Item	Description
Original	The image will be shown in original size.
Fit Screen	The image will be shown to fit the screen.

7-1.3.5 Rotate the image

The Live image can be displayed in normal or rotate to 90 degrees. Select “**Rotate**” under the “Menu” for this operation.



7-1.3.6 Alarm

This application not only allows you to remotely monitor through mobile device but receive the alarm that has been triggered by events such as Motion Detected, Sensor Triggered and Vloss.

Graphical icons below will be shown on the status:



: Motion detected



: Sensor triggered





: Video loss

Select the “Alarm” under the “Menu” to switch this function on or off.

7-2 Mobile Application Installation and Operation for Windows Mobile System

There are two kinds of applications for Window Mobile OS: JPEG compression and H.264 compression. The one for H.264 compression can transfer both audio and video signal to your mobile device.

System Requirement:

Mobile device OS : Windows mobile system 5.0 above.

Mobile device need to support internet: GPRS / 3G / Wifi... etc.

7-2.1 Mobile Application Installation

Please follow the steps cited below to perform the mobile device surveillance function on your mobile device (mobile phone, PDA ...etc).

Step 1: The mobile application called “Jrviewer.CAB” and “H264Pocket.CAB” need to be installed in your mobile device. The application can be downloaded directly from the manufacturer’s website to your mobile or; alternatively, it can be transferred to your mobile device from the CD that packed with DVR through Bluetooth or USB cable.

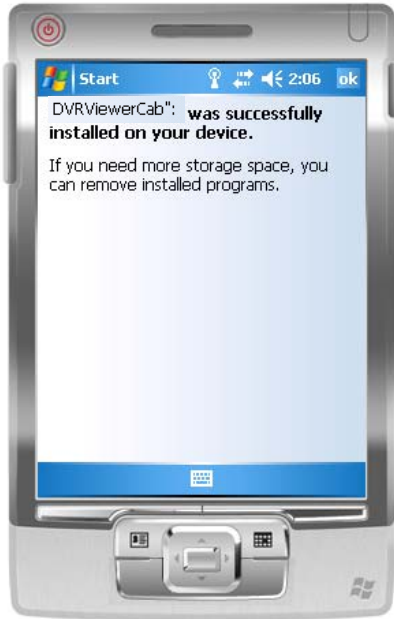
Step 2: Install the application software “Jrviewer.CAB” and “H264Pocket.CAB” in your mobile device, two folders named “Jrviewer” and “H264Pocket” will be created. It might be installed automatically after downloading; otherwise, select it from the downloading file for installation.



7-2.2 Mobile Application Operation

After the installation, enter the Program Files menu in your mobile device to run files named “**Jrviewer**” and “**H264Pocket**”.

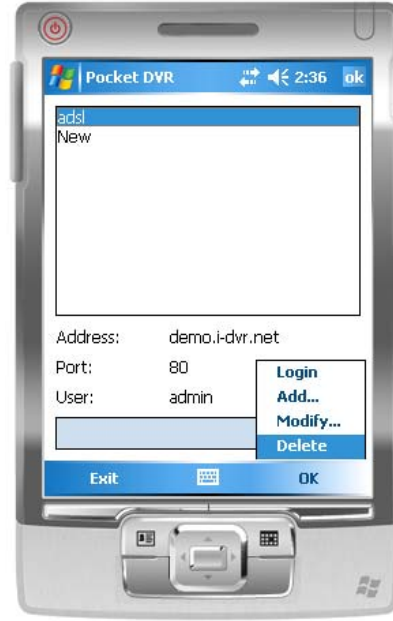
This application allows you to remotely logon and monitor DVR. Press “**OK**” to bring up the operation menu, see below chart to further information.



Item	Function	Description
Add	Add login DVR	Enter DVR's name, IP address, Port, Account user, Password then press “ OK ”
Login	Logon DVR	<ul style="list-style-type: none"> • Choose the DVR that you'd like to log on , then press “OK” • PS. The <i>Live</i> can not be displayed in your mobile when the recoding is off. • PS. Network connectivity will be affected by networking environment and bandwidth flow. The fee rate will depend on the telecom company and package fee you go with.
Modify	Modify Login DVR	Choose DVR, press “ Modify ”, and press “ OK ” to save change.
Delete	Delete Login DVR	Choose DVR and press “ Delete ” to delete the DVR info.

The operation of **Jrviewer**

The operation of **H264Pocket**



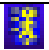
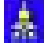

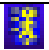
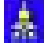

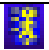
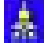

7-2.3 Operation under the LIVE monitoring.

After successful logon the DVR, press “View” to bring up operation menu. You can choose the channel, resize the image, choose the quality, and turn on/off the status bar, a alarm, full screen display....etc

7-2.3.1 Operation under the LIVE monitoring for Jrviewer


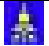

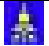

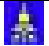



Item	Function	Description
Channel 1~16	Display for CH 1~16	Choose from CH1~16 to display
Screen	Size of image	Original : image size as original Stretch : stretch the size as full screen Fit: resize the image to fit the screen
Quality	Quality	Change the quality of image. Please note the better quality, the slower data transfer rate.
Status Bar	Status Bar	Graphical icons indicated below will be shown

		<p>on the status bar if there is event such as motion detected, sensor triggered and video loss to be detected on any channel. You can also uncheck the “Status Bar” to inactivate this function.</p> <table border="1"> <thead> <tr> <th>Icon</th> <th>Description</th> </tr> </thead> <tbody> <tr> <td></td> <td>Motion Detect</td> </tr> <tr> <td></td> <td>Sensor Trigger</td> </tr> <tr> <td></td> <td>V-Loss</td> </tr> </tbody> </table>	Icon	Description		Motion Detect		Sensor Trigger		V-Loss
Icon	Description									
	Motion Detect									
	Sensor Trigger									
	V-Loss									
Alarm	Alarm	<p>Alarm through your mobile device can be triggered if there is event to be detected. You can also uncheck the “Alarm” under the “View” to inactivate this function.</p>								

7-2.3.2 Operation under the LIVE monitoring for H264 Pocket



Item	Function	Description						
Channel 1~16	Display for CH 1~16	Choose from CH1~16 to display. CH1~4 can receive audio signal.						
Status Bar	Status Bar	<p>Graphical icons indicated below will be shown on the status bar if there is event such as motion detected, sensor triggered and video loss to be detected on any channel. You can also uncheck the “Status Bar” to inactivate this function.</p> <table border="1"> <thead> <tr> <th>Icon</th> <th>Description</th> </tr> </thead> <tbody> <tr> <td></td> <td>Motion Detect</td> </tr> <tr> <td></td> <td>Sensor Trigger</td> </tr> </tbody> </table>	Icon	Description		Motion Detect		Sensor Trigger
Icon	Description							
	Motion Detect							
	Sensor Trigger							

		 V-Loss	
Alarm	Alarm	Alarm through your mobile device can be triggered if there is event to be detected. You can also uncheck the “ Alarm ” under the “View” to inactivate this function.	
Full Screen	Full screen display	You can choose one channel to display in full screen by check this function.	

